

**MANAGEMENT SCIENCE CAMPUS,
BORDEAUX UNIVERSITY**

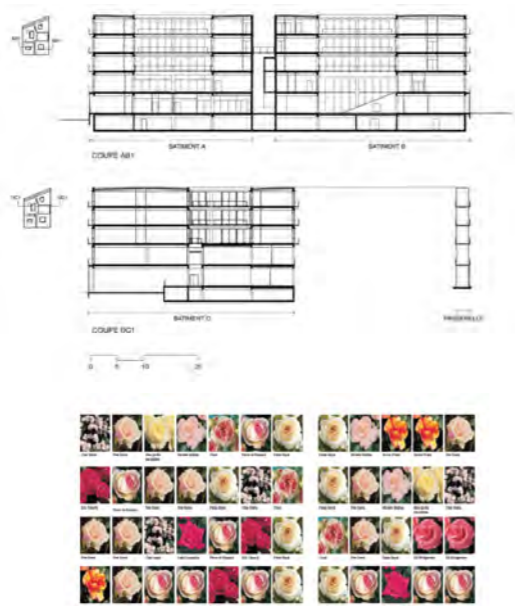
Site: Bordeaux
 Client: City of Bordeaux
 Status: Completed 2006
 Usable Area: 19,750 sq.m
 Cost: € 20 M net (2006)

Implanted in a developing urban context, the Management Science campus for the University of Bordeaux is conceived as a piece of city. The building forms a dense, extremely urban nucleus built systematically on the alignment of streets. Four blocks unfold at different levels around a square and a number of arcades and interior courtyards. Each block harbours a separate department from the second floor up, while shared facilities and restaurant occupy the ground and first floor. Within each department, staff offices are arranged in adjacency, readily linked via covered walkways to form an interdependent network of faculty connections. The structure is carried out with prefabricated elements of bulk concrete-posts, beams and decks of enormous span, thus constituting a supple and economical building system. The totally glazed facades provide abundant natural light, which can be modulated by means of the

external blinds, and offer ample views over the city. They also play their part in providing comfort in terms of warmth. In winter the spaces benefit from the input of heat radiation. In summer the blinds provide good protection from the build-up of heat on the facades. The wrap-around external balconies enable one to go out and take the air and to clean the window panes. Six hundred feet of rose bushes are planted there. Decorative and poetic, they provide a delicate touch for the users and local inhabitants of the district and recall the charm of the little gardens of the surroundings. Another form of comfort, signifying the quality of the space, the light and the seasons.

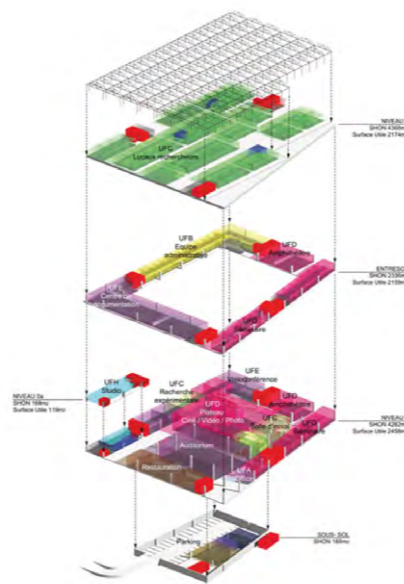
Architects Anne Lacaton & Jean Philippe Vassal with Emmanuelle Delage, Benjamin Dubreu, Frédéric Hérard, David Pradel, collaborating architects

Landscape Architect Cyrille Marlin
Engineers Setec Bâtiment, Paris, technical studies
 Secotrap, Bordeaux, technical studies
 Lionel Dubernard, construction economist
Roses Meilland





**INSTITUTE OF HUMAN SCIENCES,
UNIVERSITY OF PARIS XIII**



Site Saint-Denis, Ile de France
 Client University of Paris 13 Status
 Competition, 2007 Usable Area
 11,400 sq.m Cost € 9.975 M net
 (2007)

The project proposes a compact building, comprised of two parts, superimposed, very contrasting, responding to different uses – from very public functions to private individual work spaces – and to the different volumetric requirements of these uses:

1. An enormous hall covering the northern half of the site, comprising an 8m high volume. An efficient industrial-style structure, based on large spans and economic principles which allows the creation of a volume with very few load points, offering in this way a freedom of internal management and evolution. The height allows at once the provision of large spatial volumes, such as the auditorium or the shooting studios, and the division of peripheral spaces with mezzanine floors creating volumes of normal height and having an external aspect, allocated to offices or classrooms.

The compactness of the hall allows

a variety of spaces: peripheral spaces full of natural light; and deep-plan, sombre spaces used for opaque functions.

2. The roof of this hall constitutes a platform for level 1, upon which a lightweight envelope is deposited, denoting an independent working area for researchers.

The envelope is composed of a series of horticultural greenhouses, developed by an industry geared towards precision in climate control. These are very generously ventilated via opening roof-lights, whose automated operation is linked to interior temperature sensors, and full-height sliding doors allowing up to 50% openings in wall areas. They are further equipped with thermal curtains, and shade cloths which unfold on the underside of the vaults to regulate levels of sunlight and glare.

These devices ensure the harnessing of interior climate and

comfort and the control of internal temperature.

The offices are independent. They are organised beneath the greenhouses in such a way as to create functional groupings corresponding to the pedagogy, as well as break-out spaces and generous circulation areas by extension of the individual offices or meeting rooms.

The two parts of the building also generate very different ambient qualities:

- Animation at the heart of the hall on the ground floor, and calmness on level 1 beneath the greenhouse vaults.
- Differentiated climatic environments, both able to be exploited and combined in order to ensure the bio-climatic comfort within the building.

Architects Anne Lacaton & Jean-Philippe Vassal with Marcos Rojo Garcia, David Pradel, collaborating architects.





SCHOOL OF ARCHITECTURE, NANTES

Site Nantes, France **Client** Minister for Culture, DRAC Pays de la Loire **Status** Completed 2009 **Usable Area** 26,837 sq.m total area; 15,150 sq.m briefed programme; 4,430 sq.m additional for appropriation; 5,305 sq.m external terraces **Cost** € 17.750 M net (2004)

In building a structure of great capacity, the design provides a scheme capable of creating a set of rich and diverse situations of interest to the School of Architecture, the city and the landscape. Three decks at nine, sixteen and twenty-two meters above the natural ground level, served by

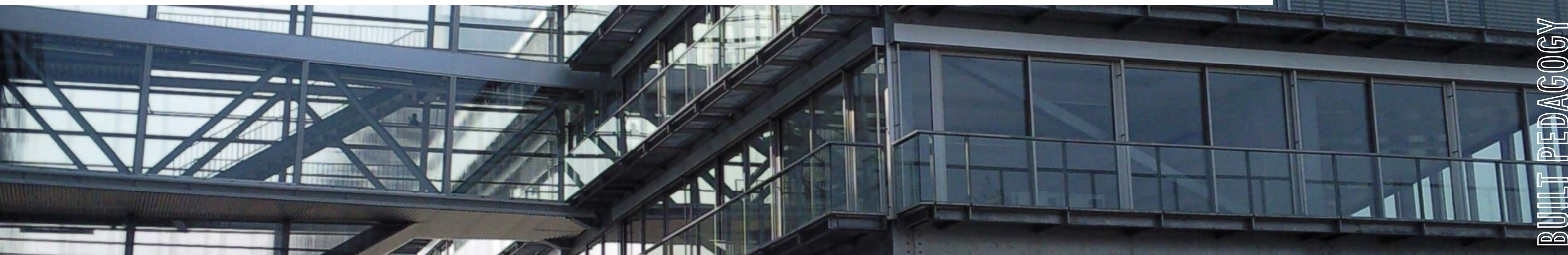
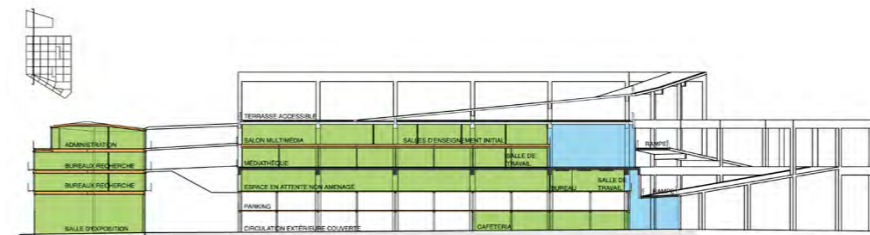
a gentle sloping external ramp, progressively put the ground surface of the city in touch with the sky overhead.

A lightweight steel structure re-divides the height of these main levels. It enables the spaces devoted to the program to be generously installed and creates a flexible system conducive to their adaptation, extension and future evolution.

Linked to the spaces of the program are ample, double-height volumes with non-attributed functions, the transparent facades of which harness the sun's rays and vouchsafe the interior climate. Upon the initiative of students, teachers or visitors, these spaces become the locus for a range of possible appropriations, events and programming. At any one moment

the adaptation of the school to new interventions and/or re-conversions are possible. Like a pedagogical tool, the project questions the program and the practices of the school as much as current norms, technologies, even its own process of elaboration.

Architects Anne Lacaton & Jean-Philippe Vassal, architects with Florian De Pous, Frédéric Hérard, and Julien Callot, Lisa Schmidt-Colinet, Isidora Meier, collaborating architects
Engineers Setec Bâtiment, concrete structure, systems, CESMA, metal structure, E2I, cost estimate, Jourdan, acoustics, Vulcanéo, fire security



UNIVERSITY OF ARTS & HUMAN SCIENCES, GRENOBLE

Site Grenoble, France **Client** Pierre Mendès University **Status** Phase 1 Completed 1995; Phase 2 Completed 2001 **Usable Area** 5.062 sq.m **Cost** € 3.078 M net (2001)

The project is positioned in an alignment of new buildings that densify the eastern axis of the university. Set 13 meters apart, the two buildings are linked by three aerial footbridges and by the continuity of the conservatories on the main south and north facades, thereby giving the appearance of a single volume.

The building, intended for teaching activities, is transparent and opens onto the campus and the chain of high mountains that encircles Grenoble.

The main facades, a double-skin system consisting of small transparent conservatories, create a plant filter: bougainvilleas to the south, bamboo to the north. The conservatories are conceived according to the same principles as those developed by professional horticulturists and are administered using the same automated systems: ventilation, watering, heating. They make for a surprising, changing and poetic image, in keeping with the artistic dimension of the university's teaching activities. The exoticism of the plant varieties invites one to

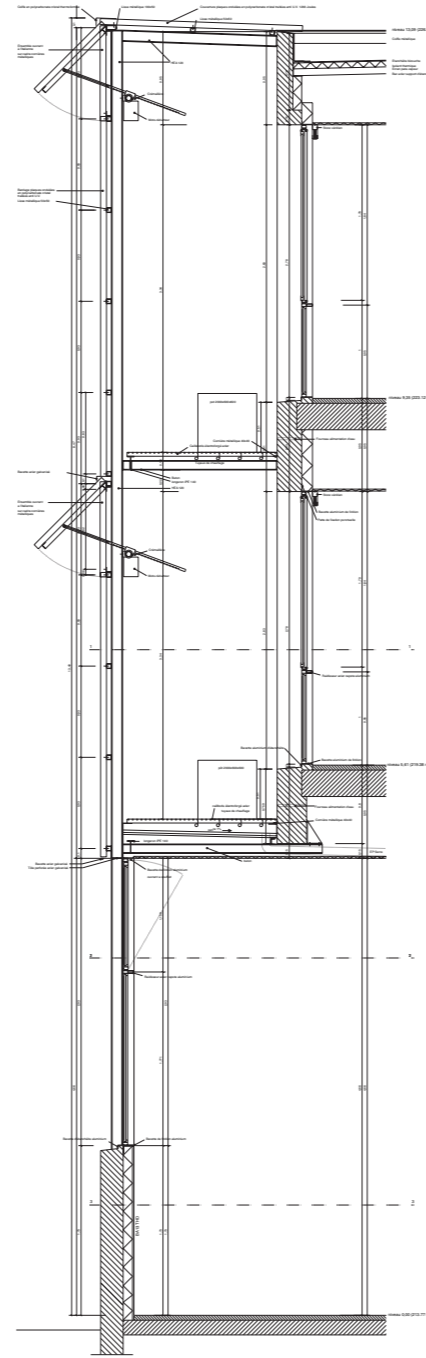
look beyond the mountains. Research into cost-effectiveness was a constant preoccupation throughout conception of the project in order to attain, within the same budget, the objectives of a larger building as warranted by the ascertaining of needs and the frequenting of university buildings. With no restriction as to the quality of the facilities, materials and products used, this approach enabled us to create additional lecture rooms, a larger assembly hall, corridors that become genuine meeting places, a much bigger library occupying the whole of one floor.

The sobriety, efficacy and rigor of the building are set alongside an unexpected event in the project, which creates its image and its poetry : the conservatory with their flowers.

Architects Anne Lacaton & Jean Philippe Vassal with Sylvain Menaud, Emmanuelle Delage, Mathieu Laporte, Pierre Yves Portier, collaborating architects

Engineers Ingérop Sud Ouest, concrete structure, construction cost, Ingérop Rhône Alpes, systems, electricity, heating, engineers

Planting Consultants Pépinières Jean Rey, Lalonde les Maures, bougainvilleas Bambouseraie de Prafrance, Anduze, bamboo



LIVING BUILDING

ACADEMIC ENVIRONMENT

BUILT PEDAGOGY

Lacaton & Vassal, Architectes, in collaboration with Loop8 Architecture and Multimedia, propose to work together with the Faculty of Architecture, Building and Planning and The University of Melbourne in the role of Architect for the new building.

1. In their capacity as architects, Lacaton & Vassal will retain Architectural Authorship of the scheme, in response to a brief provided by The University of Melbourne, having responsibility for design conception and remaining custodians of the design of the new building throughout the project.

2. In their capacity as architects, Loop8 Architecture and Multimedia will provide architectural services on site in Melbourne, being the author's representatives in Melbourne and ensuring a direct line of contact between client and architect for the duration of the project. Loop8 will provide the main client and user-group liaison and will work alongside the Faculty of Architecture, Building and Planning in the role of Project Architect for execution of the design concept and delivery of the new building. To ensure achievement of the University's objectives and alignment with the Faculty's pedagogical ambitions, a series of briefing and design development workshops with client and/or user-group representatives may be envisaged, particularly during early design stages.

3. Procurement and programming to be developed in line with client and design team input.

Lacaton & Vassal, Architectes, in collaboration with Loop8 Architecture and Multimedia, propose to work within the framework of the Melbourne Model and the Triple-Helix principles of Growing Esteem, to design and deliver a new building of outstanding quality for the Faculty of Architecture, Building and Planning and The University of Melbourne.

Research & Research Training

We imagine a building that will be the product of, and later the subject of academic and industry-wide research. Integral to their overall design approach, Lacaton & Vassal bring with them years of in-house research and delivery experience in exploiting structural solutions and industry-developed prefabricated elements in order to achieve precision in climate control and optimise spatial and economic efficiency. Through application of this expertise, we propose to unite the University of Melbourne with industry-based partners to ensure the building embodies the very latest in materials, construction technologies, building management systems and interactive climate control.

Teaching and Learning

In parallel to the processes for design and delivery of the new building, we propose the development of an internet-based information hub, an interface through which to access and utilise live information relating to the building, its design, construction, and performance. Online data, images and films will be made accessible for staff and researchers to compose a variety of case studies, student assignments, construction and detailing analyses, etc. Likewise, students will be able to observe, discuss, critique and otherwise participate in the evolution of their new studio environment. In 2002, Loop8 developed the Virtual Gallery for the Faculty of Architecture, Building & Planning, where students could upload data for online feedback and critique. In today's information age, the new building itself can become an avatar: the focus of a fluid process, at once a teaching & learning tool and an architectural discourse.

Knowledge Transfer

We see the new building as entrenching The University of Melbourne's position at the centre of a myriad of external communities and interested partners. Espousing outstanding values in architecture, landscape and urban design, the new building provides an opportunity to not only express a new and exciting image for the Faculty, but also to invite external users and user groups into the Faculty, to activate and participate in Faculty events, exhibitions, fairs, lectures, conferences and symposia. The integration of intelligent systems and construction technologies will exemplify the University's agenda for industry involvement and leadership. In addition, the web-based information hub described above could include a public interface, providing options for government, industry, private and professional users to engage with the project for a variety of approved purposes.



LACATON & VASSAL, ARCHITECTES
206 Rue Lafayette
75010 Paris FRANCE
www.lacatonvassal.com

Jean-Philippe Vassal and Anne Lacaton formed architectural practice Lacaton & Vassal as an independent agency in Bordeaux, 1987.

Following their commission for the Palais de Tokyo contemporary art space, the duo moved offices to the project site in Paris and established the limited liability company LACATON ET VASSAL, Architectes s.a.r.l. in 2002. Their projects are based on a rational and intelligent use of new materials, which enable them to offer optimal and ingenious solutions to their clients' requirements without renouncing an avant-garde architectural stance. Technique and materials are employed to keep the price at a level that enables them to construct the largest spaces possible with a strong, modern image which shuns prototypical solutions.

Company Turnover:
2005: € 788,000
2006: € 912,583
2007: € 855,019

Current Team: Anne Lacaton & Jean-Philippe Vassal, Managers; 8 architects; 2 office administrators.

ANNE LACATON

born: 2/8/55 in France, Saint Pardoux la Rivière
Diploma Architecture school of Bordeaux, France, 1980
Diploma of town planning, University of Bordeaux, 1984
Visiting professor at Architecture school of Lausanne, wint. 2003-2004, sum.2005-2006

JEAN PHILIPPE VASSAL

born: 22/2/54 in Casablanca, Morocco
Diploma Architecture school of Bordeaux, France, 1980
Architect & Town planner in Niger (West Africa), 1980-1985
Professor at Architecture school of Versailles 2002-2006, Bordeaux 1992-1999
Visiting professor at Düsseldorf University of Applied Sciences (Peter Behrens School of Architecture), summer semester 2005
Professor at the TU Berlin since 2007



LOOP8 Architecture & Multimedia
ARBV #C51152
Level 2 / 41-45 A'Beckett Street
Melbourne VIC 3000 AUSTRALIA
www.loop8.com.au

Loop8 Architecture + Multimedia is a limited liability company founded by Melbourne based architect Glenn Irwin in 2001. Loop8's interests lie in the integration of intelligent systems within a sustainable built environment.

A number of international and local architects including Six Degrees Architects, Peter Elliott Architecture + Urban Design, Brearley Architecture & Urban Design, and Kerstin Thompson Architects, have engaged Loop8 for their diverse skills and services.

As a team member of Peter Elliott Architecture + Urban Design, Glenn Irwin has contributed to the following projects:

- . Melbourne Grammar School Grimwade Upper Primary Precinct
 - . Mirka at Tolarno Hotel
 - . RMIT Building 9 Rooftop Additions
 - . Deer Park By-Pass Soundwalls
- In a similar capacity, Loop8 played a key role in documentation coordination and delivery for the RAIA award winning University of Tasmania School of Architecture by SBE & Six Degrees Architects.

Architects Peter Rush and Heidi Seemann also bring with them several years' experience in the facilitation, design and delivery of large Australian and international projects, including the Sydney Conservatorium of Music and High School with the NSW Department of Public Works; the Australian Embassy in Berlin by Bates Smart Architects in association with Braun & Schlockermann & Partners Architects, Berlin; and the AIA award winning EDO mixed-use development in Woolloomooloo by Stanasic Associates.

In 2003 Loop8 partnered with Live Load to establish an incubator for emerging architectural and design practices located in A'Beckett St, Melbourne. This flexible studio offers a synergy of cross disciplinary interaction and shared resources.

Current Team: Glenn Irwin, Director; 4 Architects; 1 Graduate Architect; 2 Student Architects; 1 Systems Programmer.

GLENN IRWIN

born: 29/10/69 in Newcastle, Australia
Bachelor of Science (Architecture), University of Sydney, 1996
Bachelor of Architecture, RMIT University, 2000
Founding Director, LOOP8 Architecture & Multimedia, 2001
Sessional Tutor, University of Melbourne

JULIA LEHMANN

born: 25/6/71 in Sydney, Australia
Bachelor of Science (Architecture), University of Sydney, 1996
Bachelor of Architecture, RMIT University, 2000
Director, Live Load, 2000

PETER RUSH

born: 23/1/65 in Melbourne, Australia
Bachelor of Architecture, University of Sydney, 1996
Director, Seemann Rush, 2006
Design Studio Leader, Sydney University
Sessional Tutor, UTS
Sessional Tutor, COFA, Sydney

HEIDI SEEMANN

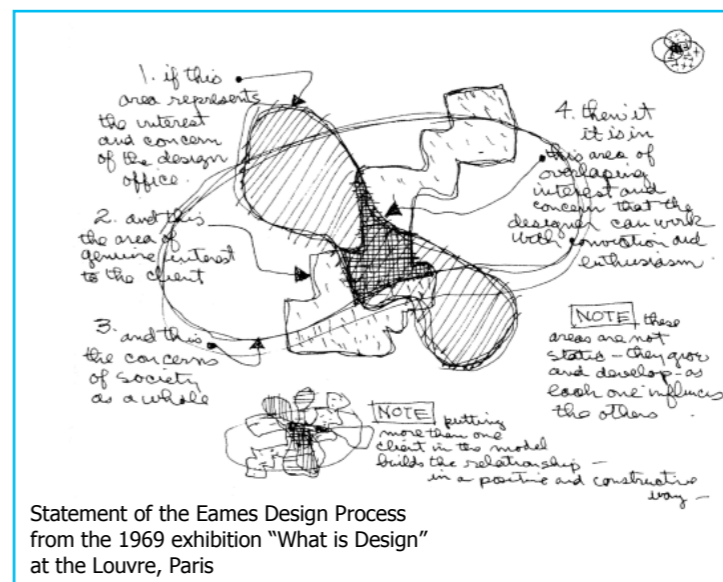
born: 18/12/63 in Germany
Dipl.-Ing. FH Architektur, Würzburg Fachhochschule, Germany, 1988
Heidi Seemann Architect, 2000-2004
Director, Seemann Rush, 2008
Sessional Tutor, Sydney University

JEREMY THE

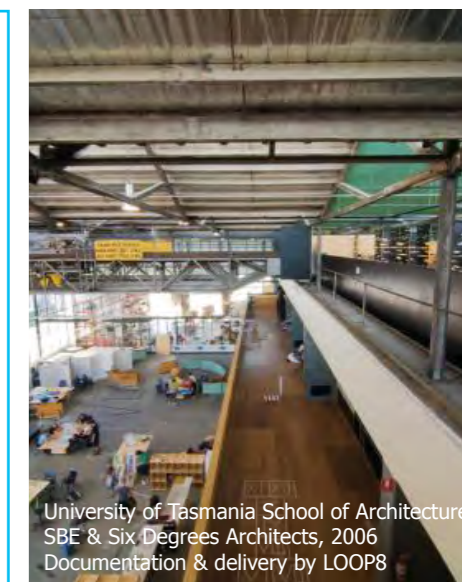
born: 28/3/77 in Canberra, Australia
Bachelor of Commerce, University of Melbourne, 1998
International Exchange, Ecole d'Architecture Paris Val-de-Seine, 2002
Bachelor of Architecture (Hons), University of Melbourne, 2004
Sessional Tutor, University of Melbourne
Sessional Tutor, RMIT University



Palais de Tokyo
Centre for Contemporary Creation, Paris
Lacaton & Vassal, 2001



Statement of the Eames Design Process
from the 1969 exhibition "What is Design"
at the Louvre, Paris



University of Tasmania School of Architecture
SBE & Six Degrees Architects, 2006
Documentation & delivery by LOOP8

AWARDS

- . Grand Prix National d'Architecture 2008, France
- . Erich Schelling Award 2006 - Fondation Erich Schelling, Karlsruhe
- . Award «Sustainability and Residential Innovation», City of Madrid, 2006
- . Grand Prix National d'Architecture Jeune Talent, France, 1999
- . Lauréats, Albums de la Jeune Architecture, France, 1991
- . Mies Van der Rohe Award - European Prize for Contemporary Architecture
- . Finalist in 2007 for the Management Sciences Campus, University of Bordeaux, France
- . Finalist in 2003 for the Palais de Tokyo, Site for contemporary creation Paris, France
- . Shortlisted in 2005 for 14 social dwellings, Mulhouse, France
- . Shortlisted in 1997 for the University of Arts and Human Sciences, Grenoble, France
- . Equerre d'Argent Award - France
- . Shortlisted in 2006 (Management School- University of Bordeaux), 2002 Office building, Nantes), 2001 (Palais de Tokyo, Paris), 1999 (House in Lège Cap Ferret), 1996 (University of Arts and human sciences, Grenoble)

EXHIBITIONS

- . Cité de l'architecture et du patrimoine, Paris, Monographic Exhibition, November 2008
- . "Prix Mies Van der Rohe 2007", Group Exhibition, Barcelona, Paris, 2007
- . Cité de l'architecture et du patrimoine, France, "Avant-Après. Architectures au fil du temps", Group Exhibition, 2007
- . Villa Noailles, Hyères, France, "Habiter, du plaisir au luxe", Monographic Exhibition, 2006
- . Leipzig, GzFK, musée d'art contemporain, "Archit-Action", 2006
- . Cornell University, 2005
- . Sao Paulo, Biennale d'architecture, 2005
- . Architectural Association, Londres, Monographic Exhibition, 2004
- . Architektur Zentrum Vienna, 2003, Monographic Exhibition
- . De Singel, Anvers, 2003, Monographic Exhibition, catalogue
- . arc en rêve centre d'architecture, Bordeaux, 2002, Monographic Exhibition
- . Art Front Gallery, Tokyo, été 2002. "New Trends of Architecture 2002".
- . Venice, Architecture Biennale 2002, "Contextes", French Pavilion, catalogue
- . "Archilab", Orléans, "Habiter aujourd'hui", 2001, et 1999, catalogues.
- . Guggenheim Museum Soho, New York, oct. 98 - janv 99. "Premises : Invested Spaces in visual arts & architecture from France, 1958-98", catalogue.
- . Galerie Taisei, Tokyo, 1998, "Nouvelle Vague", part of Japan's Year of France, catalogue.
- . Institut Français d'Architecture, Paris, 1995, "Il fera beau demain" catalogue.
- . Institut Français d'Architecture, Paris, 1991, "40 architectes de moins de 40 ans", catalogue.

PUBLICATIONS

- . "PLUS, large scale housing development. An exceptional case", Frédéric Druot, Anne Lacaton & Jean Philippe Vassal, Editorial GG, Gustavo Gili, Barcelona, sept. 2007
- . Lacaton & Vassal, 2G Books, monograph, Editorial GG, Gustavo Gili, Barcelona, 2007
- . Semi-detached and terraces Houses, Edition DETAIL, Germany, 2006
- . Groundscapes, the rediscovery of the ground in contemporary architecture, Editorial GG, Barcelone, 2005
- . Operative optimism in architecture, Actar, Barcelona, 2005
- . Minimal architecture, Prestel, 2003
- . Architecture NOW, vol.2, Taschen, 2002
- . Lacaton & Vassal, 2G n° 21, monograph, Editorial GG, Gustavo Gili, Barcelona, 2002
- . Verb, architecture boogazine, Actar, Barcelona, 2001
- . Modern House 2, Phaidon, London, 2000
- . 10 x 10, 10 critics, 100 architects, Phaidon, London, 2000
- . Dictionnaire de l'architecture du 20^e siècle, Edition Hazan, Paris, 1996
- . Une maison-particulière, Hubert Tonka & Jeanne Marie Sens, Editors, Paris, 1994

FILMS

- . Les mots de l'Architecte : "LACATON & VASSAL" by Léonardo Di Costanzo, 2000
- . Les Films d'ici, Paris, 52min. VHS PAL

"It will have a unique level of redundancy built into it, and it will be up to the staff and students to establish how to occupy the huge roof terrace and the expansive corridors. It promises to be one of the most exciting places to learn architecture in the world..."

Architecture critic Kieran Long on the Nantes School of Architecture by Lacaton & Vassal, on the eve of their monographic exhibition at the Architectural Association in London, 2004